

# VESTEL

---

## WASHING MACHINE

---

USER MANUAL






WD814T2



## Thank you for choosing this product.

This User Manual contains important safety information and instructions on the operation and maintenance of your appliance.

Please take the time to read this User Manual before using your appliance and keep this book for future reference.

| Icon   | Type                          | Meaning                                     |
|--|-------------------------------|---|
|  | <b>WARNING</b>                | Serious injury or death risk                |
|  | <b>RISK OF ELECTRIC SHOCK</b> | Dangerous voltage risk                      |
|  | <b>FIRE</b>                   | Warning; Risk of fire / flammable materials |
|  | <b>CAUTION</b>                | Injury or property damage risk              |
|  | <b>IMPORTANT / NOTE</b>       | Operating the system correctly              |

# CONTENTS

|   |           |
|---|-----------|
| <b>1.SAFETY INSTRUCTIONS .....</b>                            | <b>1</b>  |
| 1.1 General Safety Warnings .....                             | 2         |
| 1.2 During Use .....  | 8         |
| 1.3 Packaging and Environment.....                            | 9         |
| 1.4 Savings Information.....                                  | 9         |
| <b>2. TECHNICAL SPECIFICATIONS .....</b>                      | <b>10</b> |
| <b>3.OVERVIEW OF YOUR MACHINE .....</b>                       | <b>11</b> |
| 3.1 General Appearance.....                                   | 11        |
| <b>4.INSTALLATION.....</b>                                    | <b>11</b> |
| 4.1 Removing the Transit Bolts.....                           | 11        |
| 4.2 Adjusting the Feet / Adjusting Adjustable Stays.....      | 12        |
| 4.3 Electrical Connection.....                                | 12        |
| 4.4 Water Inlet Hose Connection.....                          | 12        |
| 4.5 Water Discharge Connection.....                           | 13        |
| <b>5.CONTROL PANEL OVERVIEW.....</b>                          | <b>13</b> |
| 5.1 Detergent Drawer .....                                    | 14        |
| 5.2 Sections .....  | 14        |
| 5.3 Program Dial.....   | 15        |
| 5.4 Electronic Display .....                                  | 15        |
| <b>6.USING YOUR WASHING MACHINE.....</b>                      | <b>15</b> |
| 6.1 Preparing Your Laundry.....                               | 15        |
| 6.2 Putting Laundry in the Machine.....                       | 16        |
| 6.3 Adding Detergent to the Machine .....                     | 16        |
| 6.4 Operating Your Machine.....                               | 17        |
| 6.5 Selecting a Programme.....                                | 17        |
| 6.6 Half-Load Detection System.....                           | 17        |
| 6.7 Additional Functions .....                                | 17        |
| 6.8 Start/Pause button.....                                   | 21        |
| 6.9 Child Lock .....  | 21        |
| 6.10 Cancelling the Programme .....                           | 21        |
| 6.11 Programme End.....                                       | 21        |
| <b>7.PROGRAMME TABLE.....</b>                                 | <b>22</b> |
| 8.1 Warning .....   | 25        |
| 8.2 Water Inlet Filters .....                                 | 25        |
| 8.3 Pump Filter .....   | 26        |
| 8.4 Detergent Drawer .....                                    | 26        |
| <b>9.Body / Drum .....</b>                                    | <b>27</b> |
| <b>10.TROUBLESHOOTING.....</b>                                | <b>28</b> |
| <b>11.AUTOMATIC FAULT WARNINGS AND WHAT TO DO .....</b>       | <b>29</b> |
| <b>12.DESCRIBING THE ENERGY LABEL AND SAVING ENERGY .....</b> | <b>30</b> |

# 1. SAFETY INSTRUCTIONS

|  |                                    |
|--|------------------------------------|
| Operating voltage / frequency                  | (220-240) V~/50Hz                  |
| Total current (A)                              | 10                                 |
| Water pressure (Mpa)                           | Maximum 1 Mpa /<br>Minimum 0. 1Mpa |
| Total power (W)                                | 2200                               |
| Maximum washing capacity<br>(dry laundry) (kg) | 8                                  |
| Maximum drying capacity (kg)                   | 6                                  |

- Do not install your machine on a carpet or such grounds that would prevent the ventilation of its base.
- The appliance is not intended for use by people (including children) with reduced physical, sensory or mental capabilities, or lack of experience and knowledge unless they have been given supervision or instruction concerning use of the appliance by a person responsible for their safety.
- Children of less than 3 years should be kept away unless continuously supervised.
- Call the nearest authorized service centre for a replacement if the power cord malfunctions.
- Use only the new water inlet hose coming with your machine when making water inlet connections to your machine. Never use old, used or damaged water inlet hoses.
- Children should not play with the appliance.

Cleaning and user maintenance should not be made by children without supervision.

**NOTE:** For a softcopy of this user manual, please contact the following address: “washingmachine@standardtest.info”. In your e-mail, please provide the model name and serial number (20 digits) which you can find on the appliance door.

**To ensure your safety and the safety of others, please read the following safety precautions before using or installing your Washer Dryer.**



**Your machine is for domestic use only. Using it for commercial purposes will void your warranty.**

**This manual has been prepared for more than one model therefore your appliance may not have some of the features described within. For this reason, it is important to pay particular attention to any figures whilst reading the operating manual.**

## **1.1 General Safety Warnings**

**Before setting up your Washer Dryer, remove the four transit bolts and the rubber washers from the rear of the machine.**

- Your warranty does not cover damage caused by external factors such as fire, flooding and other sources of damage.
- Retain this user manual for future use and pass it on to the next user.
- The necessary ambient temperature for operation

of your Washer Dryer is 15-25 °C.

- Where the temperature is below 0 °C, hoses may split or the electronic card may not operate correctly.
- Please ensure that garments loaded into your Washer Dryer are free from foreign objects such as nails, needles, lighters and coins.
- Lints must not be allowed to accumulate around the washer dryer.
- Residue may build up on detergent and softeners exposed to air for a long period of time. Only put softener or detergent in the drawer at the beginning of each wash.
- Unplug your Washer Dryer and switch off the water supply if the Washer Dryer is left unused for a long time. We also recommend that you leave the door open to prevent build up of humidity inside the Washer Dryer.
- Some water may be left in your Washer Dryer as a result of quality checks during production. This will not affect the operation of your Washer Dryer.
- Keep the document bag that was supplied inside your Washer Dryer and contained this user manual out of the reach of children and babies to prevent the risk of suffocation.
- The packaging of the machine could be hazardous to children. Do not allow children to play with the packaging or small parts from the Washer Dryer.
- Only use pre-wash programmes for very dirty laundry.
- Do not exceed the maximum load for the washing or drying programme you have chosen.

- In the event of a fault, unplug your Washer Dryer and switch off the water supply. Do not attempt to repair your Washer Dryer yourself. Repairs should only be undertaken by an approved service agent.
- Never open the detergent drawer while your Washer Dryer is running.
- Never force the door open when your Washer Dryer is running.
- Please follow the manufacturers' instructions on the use of fabric conditioner or any similar products that you intend to use in your Washer Dryer.
- Do not stop your Washer Dryer before the drying phase of a programme has been completed. If you have to do so, quickly remove all of your laundry and immediately spread the items on an appropriate surface to allow them to cool.
- The appliance must not be supplied through an external switching device, such as a timer, or connected to a circuit that is regularly switched on and off by a utility.
- This appliance must not be installed behind a lockable door, a sliding door or a door with a hinge on the opposite side to that of the washer dryer, in such a way that a full opening of the washer dryer door is restricted.
- Install your Washer Dryer in a location that can be ventilated and has constant air circulation.

## **SAFETY WARNINGS**

- You must read these warnings. Ignoring these warnings may put you or others at risk of fatal injuries.

## **RISK OF BURNS**

- Do not touch the door, drain hose or any discharged water while your Washer Dryer is running. The high temperatures involved pose a burn risk.
- Open the door fully after the drying process. Do not touch the door glass. It will reach high temperatures and pose a burn risk.

## **ELECTROCUTION RISK**

Do not connect your Washer Dryer to the mains electricity supply using an extension lead.

- A damaged power cord/plug can cause fire or give you an electric shock. When damaged it must be replaced, this should only be done by qualified personnel.
- Never remove the plug from the socket by pulling the cord. Always hold the plug.
- Never touch the power cord/plug with wet hands as this could cause a short circuit or electric shock.
- Do not touch your Washer Dryer if your hands or feet are wet.
- Call the nearest authorised service company for assistance if the power cord malfunctions.

## **Explosion Risk**

- Thoroughly rinse off any chemicals, such as stain remover, from your garments before beginning a washing and drying programme. Failure to do so may cause a risk of explosion when the drying function is used.



## **Fire Risk**

- Do not keep flammable or explosive liquids near your machine.
- Items that have been soiled with substances such as cooking oil, acetone, alcohol, petrol, kerosene, spot removers, turpentine, waxes and wax removers should be washed in hot water with an extra amount of detergent before being dried in the tumble dryer.
- Do not use a detergent ball/device if you have selected a washing and drying programme as this may cause a fire hazard.
- Do not dry your laundry under the conditions specified below as they present a fire risk:
  - If the laundry is not washed.
  - If oil based stains are not pre-treated before beginning a washing or drying programme.
  - Laundry which has been cleaned with industrial chemicals.
  - Laundry that has a high amount of sponge, foam, rubber or rubber-like parts and accessories.
  - Items such as foam rubber (latex foam), shower caps, waterproof textiles, rubber backed articles and clothes or pillows fitted with foam rubber pads should not be dried in the drying process of the appliance.
  - Stuffed or damaged items (such as pillows or jackets). The rubber sponge presents a fire risk during the drying process.
- Never use products that contain solvents in your machine.

- Please ensure that garments loaded into your Washer Dryer are free from foreign objects such as nails, needles, lighters, matches and coins.

### **Fall and Injury Risk**

- Do not climb on your Washer Dryer.
- Make sure hoses and cables do not cause a trip hazard.
- Do not turn your Washer Dryer upside down or on its side.
- Do not lift your Washer Dryer using the door or detergent drawer.
- Make sure hoses and cables do not cause a trip hazard.

 **To avoid risk of injury, please take care when moving your Washer Dryer. It is heavy and we recommend that a minimum of two people move your Washer Dryer.**

### **Child Safety**

- Do not allow children to play with the machine.
- Do not leave children unattended near the machine. They might lock themselves in the machine.
- The door glass and machine surface can become extremely hot during operation. Do not allow children to touch the machine; it may damage their skin.
- The packaging of the machine could be hazardous to children. Do not allow children to play with the packaging or small parts from the Washer Dryer.
- Poisoning and irritation may occur if detergent or other washing aids are consumed or come into

contact with skin or eyes. Keep cleaning materials out of reach of children.

## **1.2 During Use**

- Do not allow pets near the machine.
- Please ensure that you have removed all of the packaging materials and protective tape from the outside of your Washer Dryer, inside the drum and inside the detergent drawer before using. Check for any external visible damage. Do not install or use your Washer Dryer if it is damaged.
- Your Washer Dryer is for domestic use only and is only intended to wash and dry items which are specified by the manufacturer to be machine washable and dryable on the label and textiles composed of hand washable wool or wool blend fabrics as well as satin, lace, silk and other hand-washable garments. Do not use your Washer Dryer for any purpose not expressly specified in this user guide.
- This appliance can be used by children aged from 8 years and above and by persons with reduced physical, sensory or mental capabilities or lack of experience and knowledge if they have been given supervision or instruction concerning use of the appliance in a safe way and understand the hazards involved. Children shall not play with the appliance. Cleaning and user maintenance shall not be done by children without supervision.
- Installation of your machine must only be carried out by an authorised service agent. Installation by anyone other than an authorised agent will void your warranty.

## 1.3 Packaging and Environment

### DISPOSE OF PACKAGING AND YOUR OLD MACHINE RESPONSIBLY

#### Removal of packaging materials

Packaging materials protect your machine from any damage that may occur during transportation. Please recycle the packaging materials.

Recycled material reduces raw material consumption and lowers waste production.

## 1.4 Savings Information

Some important information to get the most efficient use out of your machine:

- The amount of laundry you put in your Washer Dryer should not exceed the maximum amount indicated. Avoid overloading to allow your machine to run more efficiently.
- Not using the pre-wash feature for normal and lightly soiled laundry will save electricity and water consumption.

#### CE Declaration of conformity

We declare that our products meet the applicable European Directives, Decisions and Regulations and the requirements listed in the standards referenced.

#### Disposal of your old machine

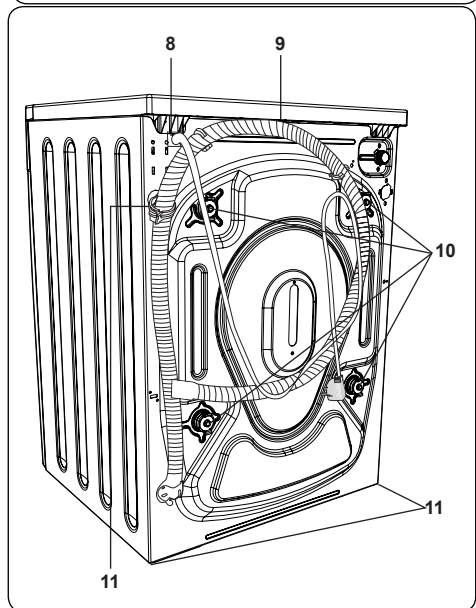
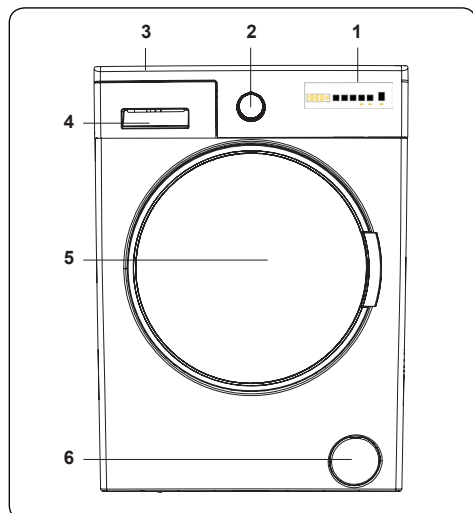


The symbol on the product or on its packaging indicates that this product may not be treated as household waste. Instead it shall be handed over to the applicable collection point for the recycling of electrical and electronic equipment. By ensuring this product is disposed of correctly, you will help prevent potential negative consequences for the environment and human health, which could otherwise be caused by inappropriate waste handling of this product. For more detailed information about recycling of this product, please contact your local city office, your household waste disposal service or the shop where you purchased the product.

## 2. TECHNICAL SPECIFICATIONS

|  |                            |
|--|----------------------------|
| Maximum washing capacity (dry laundry) (kg)  | 8.0                        |
| * Maximum drying capacity (kg)   | 6.0                        |
| Spin speed (rpm)   | 1400                       |
| Number of programmes   | 15                         |
| Operation voltage / Frequency (v/hz)   | 220-240 / 50               |
| Water pressure (mpa)   | Maximum: 1<br>Minimum: 0.1 |
| Dimensions (HxWxD) (mm)  | 845x597x582                |
| * You should not put dry laundry in your machine for drying.                                 |                            |
| Energy consumption (washing, spinning, drying) (kWh/cycle)                                   | 5.44                       |
| Energy consumption (only washing and spinning) (kWh/cycle)                                   | 1.22                       |
| Water consumption (washing, spinning, drying) (l/cycle)                                      | 131                        |
| <b>EN 50229</b> standard-compliant control programmes  |                            |
| <b>Washing programme:</b>  |                            |
| 2. Programme "Cotton Eco", temperature 60°C, maximum spinning speed 1400 rpm, 8 kg laundry.  |                            |
| <b>Drying Programmes:</b>  |                            |
| 1. Drying : 13. Programme "Cotton dry"   |                            |
| Drying option additional function selection: Drying Option 3 (cupboard dry)                  |                            |
| Load group: (~ 6 kg) (with a load group including 2 sheet + 8 pillowcases + 23 hand towels.) |                            |
| 2. Drying: 13. Programme "Cotton dry"  |                            |
| Drying option additional function selection: Drying Option 1 (iron dry)                      |                            |
| Load group: 2 kg (with a load group including 1 sheet + 4 pillowcases + 2 hand towels.)      |                            |

### 3. OVERVIEW OF YOUR MACHINE



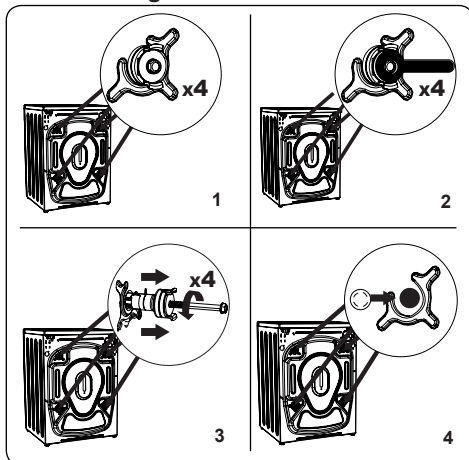
#### 3.1 General Appearance

1. Electronic Display
2. Programme Dial
3. Upper Tray
4. Detergent Drawer
5. Drum

6. Pump Filter Cover
7. Power Cord
8. Drain Hose
9. Transport Screws
10. Adjustable Feet
11. Plastic Drain Hose Holder: (Do not remove the holder; the operation of the machine will be affected).

### 4. INSTALLATION

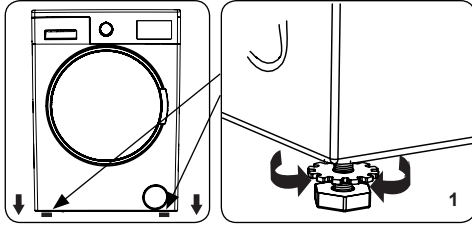
#### 4.1 Removing the Transit Bolts



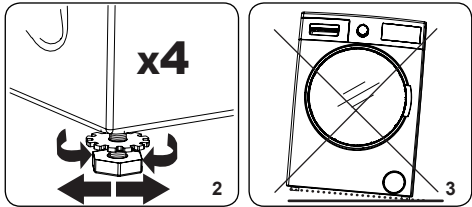
1. Before operating the washing machine, remove the 4 transit bolts and rubber spacers from the rear of the machine. If the bolts are not removed, they may cause heavy vibration, noise and malfunction of the machine and void the warranty.
2. Loosen the transit bolts by turning them anticlockwise with an appropriate spanner.
3. Remove the transit bolts with a straight pull.
4. Fit the plastic blanking caps supplied in the accessories bag into the gaps left by the removal of the transit bolts. The transit bolts should be stored for future use.

**NOTE:** Remove the transit bolts before using the machine for the first time. Faults occurring due to the machine being operated with transit bolts fitted are out of the scope of the warranty.

## 4.2 Adjusting the Feet / Adjusting Adjustable Stays

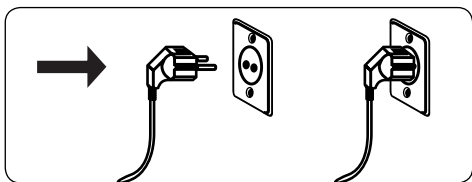


1. Do not install your machine on a surface (such as carpet) that would prevent ventilation at the base.
  - To ensure silent and vibration-free operation of your machine, install it on a firm surface.
  - You can level your machine using the adjustable feet.
  - Loosen the plastic locking nut.



2. To increase the height of the machine, turn the feet clockwise. To decrease the height of the machine, turn the feet anticlockwise.
  - Once the machine is level, tighten the locking nuts by turning them clockwise.
3. Never insert cardboard, wood or other similar materials under the machine to level it.
  - When cleaning the ground on which the machine is located, take care not to disturb the level of the machine.

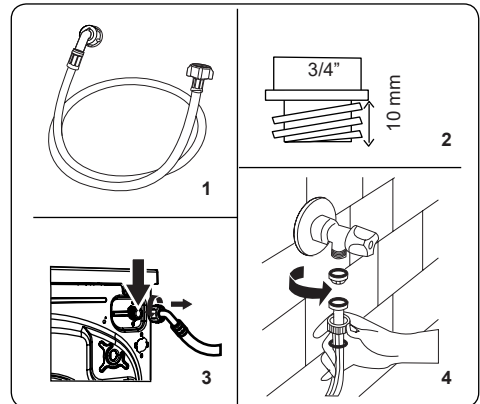
## 4.3 Electrical Connection



- Your Washing Machine requires a 220-240V, 50 mains supply.
- The mains cord of your washing machine is equipped with an earthed plug. This plug should always be inserted to an earthed socket of 10 amps.
- If you do not have a suitable socket and fuse conforming with this, please ensure the work is carried out by a qualified electrician.
- We do not take responsibility for damage that occurs due to the use of ungrounded equipment.

**NOTE:** Operating your machine with low voltage will cause the life cycle of your machine to be reduced and its performance to be restricted.

## 4.4 Water Inlet Hose Connection



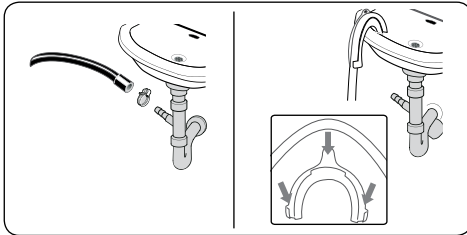
1. Your machine may have either a single water inlet connection (cold) or double water inlet connection (hot and cold) depending on the machine specifications. The white capped hose should be connected to cold water inlet and red capped hose to the hot water inlet (if applicable).
  - To prevent water leaks at the joints, either 1 or 2 nuts (depending on your machine's specifications) are supplied in the packaging with the hose. Fit these nuts to the end(s) of the water inlet hose that connect to the water supply.
2. Connect new water inlet hoses to a  $\frac{3}{4}$ " threaded tap.
  - Connect the white capped end of the

water inlet hose to the white water inlet valve on the rear side of the machine and the red capped end of the hose to the red water inlet valve (if applicable).

- Hand tighten the connections. If in any doubt, consult a qualified plumber.
  - Water flow with pressure of 0. 1-1 Mpa will allow your machine to operate at optimum efficiency (pressure of 0. 1 Mpa means that more than 8 litres of water per minute will flow through a fully opened tap).
3. Once you have made all of the connections, carefully turn the water supply on and check for leaks.
  4. Ensure that the new water inlet hoses are not trapped, kinked, twisted, folded or crushed.
- If your machine has a hot water inlet connection, the temperature of the hot water supply should not be higher than 70°C.

**NOTE:** Your Washing Machine must only be connected to your water supply using the supplied new fill hose. Old hoses must not be reused.

#### 4.5 Water Discharge Connection

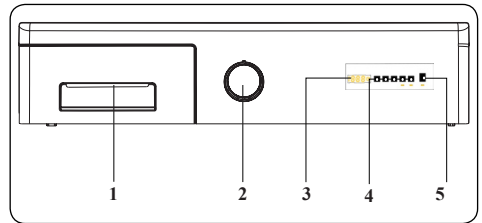


- Connect the water drain hose to a

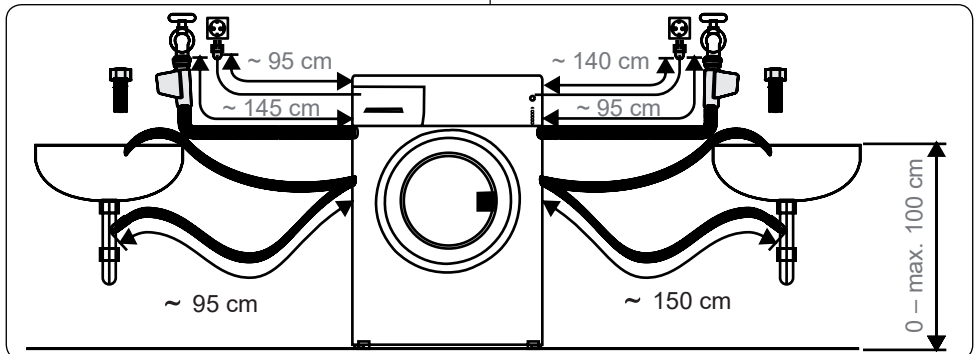
standpipe or to the outlet elbow of a household sink, using additional equipment.

- Never attempt to extend the water drain hose.
- Do not put the water drain hose from your machine into a container, bucket or bathtub.
- Make sure that the water drain hose is not bent, buckled, crushed or extended.
- The water drain hose must be installed at a maximum height of 100 cm from the ground.

#### 5. CONTROL PANEL OVERVIEW



1. **Detergent drawer**
2. **Programme Dial:** Use the programme dial to select the washing / drying programme for your laundry. Turn the programme dial clockwise or anticlockwise to select the required programme. Make sure that the dial is pointing exactly at the selected programme.
3. **Electronic Display**
4. **Additional Function Buttons:** Use these buttons to select additional functions for the laundry programme. See Additional Functions for more

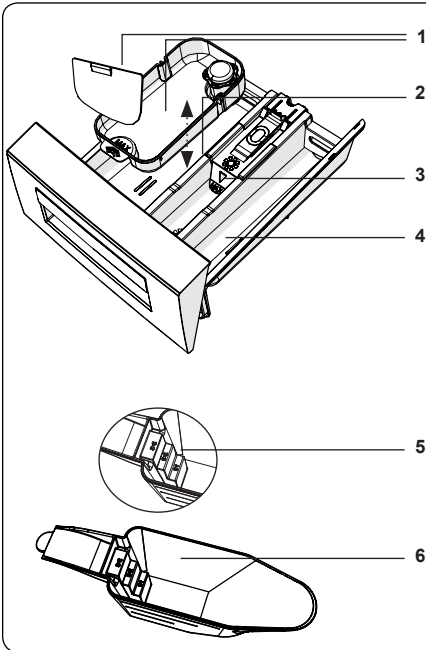
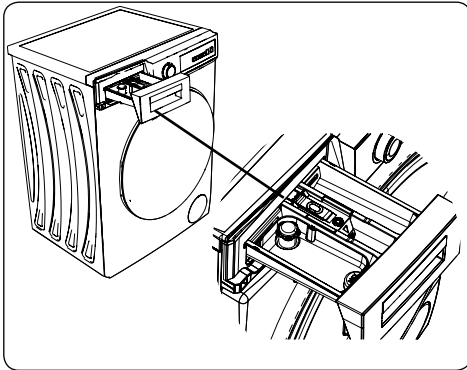




information.

- 5. Start/Pause button:** Start or pause the selected programme.

### 5.1 Detergent Drawer

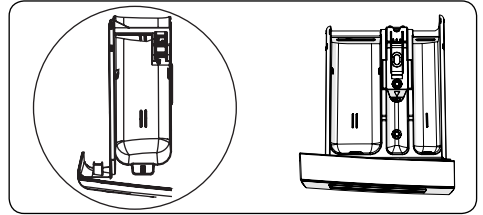


1. Liquid Detergent Attachments
2. Main Wash Detergent Compartment
3. Softener Compartment
4. Pre-Wash Detergent Compartment
5. Powder Detergent Levels
6. Powder Detergent Scoop (\*)

(\*) Specifications may vary depending on the machine purchased.

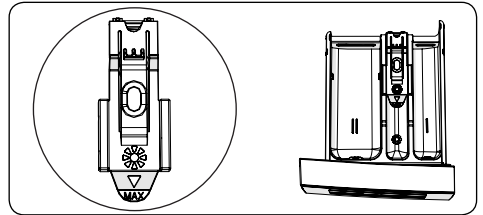
### 5.2 Sections

#### Main wash detergent compartment:



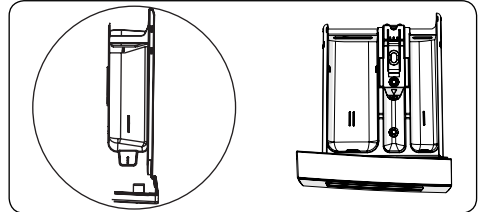
This compartment is for liquid or powder detergents or limescale remover. The fluid detergent level plate will be supplied inside your machine. (\*)

#### Fabric conditioner, starch, detergent compartment:



This compartment is for softeners, conditioners or starch. Follow the instructions on the packaging. If softeners leave residue after use, try diluting them or using a liquid softener.

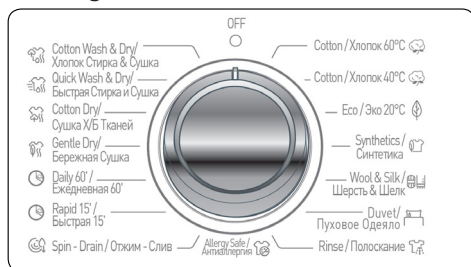
#### Pre-wash detergent compartment:



This compartment should be used only when the pre-wash feature is selected. We recommend that the pre-wash feature is used only for very dirty laundry.

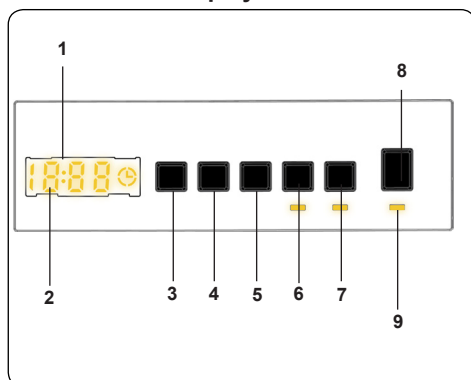
(\*) Specifications may vary depending on the machine purchased.

## 5.3 Program Dial



- To select the desired programme, turn the programme dial either clockwise or anti-clockwise until the marker on the programme dial points to the chosen programme.
- Make sure that the programme dial is set exactly to the programme you want.

## 5.4 Electronic Display

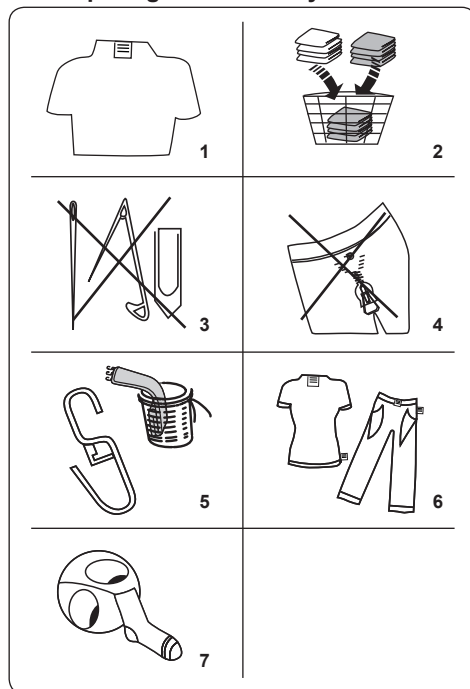


- Electronic Display
- Digital Display
- Water Temperature Adjustment Button
- RPM Speed Adjustment Button
- Delayed Start Additional Function
- Duration Drying selection
- Drying option selection
- Start/Pause Button
- Start/Pause Button Lamp

The display panel shows the washing delay timer (if set), temperature selection, spin speed, any additional functions selected. The display panel shows "End" when the selected programme is complete. The display panel also indicates if a fault has occurred with your machine.

## 6. USING YOUR WASHING MACHINE

### 6.1 Preparing Your Laundry




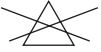

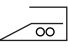
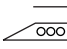
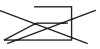









- Follow the instructions given in the care labels on the clothing.
  - Separate your laundry according to type (cotton, synthetic, sensitive, wool etc.), washing temperature (cold, 30°, 40°, 60°, 90°) and the degree of dirtiness (slightly stained, stained, highly stained).
- Never wash coloured and white laundry together.
  - Dark textiles may contain excess dye and should be washed separately several times.
- Ensure that there are no metallic materials on your laundry or in the pockets; if so, remove them.

**CAUTION:** Any malfunctions which occur due to foreign materials damaging your machine are not covered by the warranty.

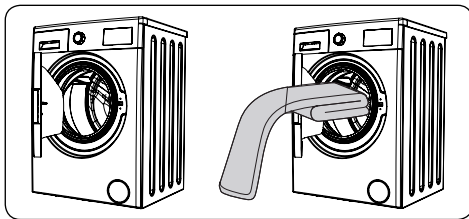
- Close zips and fasten any hooks and eyes.
- Remove the metallic or plastic hooks of

curtains or place them in a washing net or bag.

6. Reverse textiles such as pants, knitwear, t-shirts and sweat shirts.
7. Wash socks, handkerchiefs and other small items in a washing net.

|  |  |   |
|--|--|---|
| <br>Can be bleached   | <br>Do not bleach                         | <br>Normal washing                       |
| <br>Maximum ironing temperature 150°C                         | <br>Maximum ironing temperature 200°C     | <br>Do not iron                          |
| <br>Can be dry cleaned  | <br>No dry cleaning                       | <br>Dry flat                             |
| <br>Drip dry  | <br>Hang to dry                           | <br>Do not tumble dry                    |
| <br>Dry cleaning in gas oil, pure alcohol and R113 is allowed | <br>Perchloroethylene R11, R13, Petroleum | <br>Perchloroethylene R11, R113, Gas oil |

## 6.2 Putting Laundry in the Machine



- Open the door of your machine.
- Spread your laundry evenly in the machine.

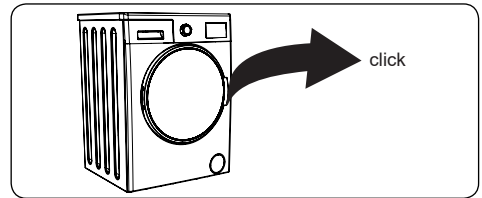
**NOTE:** Take care not to exceed the maximum load of the drum as this will give poor wash results and cause creasing. Refer to the washing programme tables for information on load capacities.

The following table shows approximate

weights of typical laundry items:

| LAUNDRY TYPE | WEIGHT (gr) |
|--------------|-------------|
| Towel        | 200         |
| Linen        | 500         |
| Bathrobe     | 1200        |
| Quilt cover  | 700         |
| Pillow slip  | 200         |
| Underwear    | 100         |
| Tablecloth   | 250         |

- Load each item of laundry separately.
- Check that no items of laundry are trapped between the rubber seal and the door.
- Gently push the door until it clicks shut.



- Make sure the door is fully closed, otherwise the programme will not start.

## 6.3 Adding Detergent to the Machine

The amount of detergent you will need to put in your machine will depend on the following criteria:

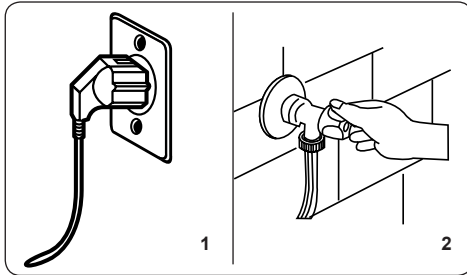
- If your clothes are only slightly soiled, do not pre-wash. Put a small amount of detergent (as specified by the manufacturer) into compartment II of the detergent drawer.
- If your clothes are excessively soiled, select a programme with pre-wash and put  $\frac{1}{4}$  of the detergent to be used into compartment I of the detergent drawer and the rest in compartment II.
- Use detergents produced for automatic washing machines. Follow the manufacturer's instructions on the amount of detergent to use.
- In areas of hard water, more detergent will be required.
- The amount of the detergent required will increase with higher washing loads.
- Put softener in the middle compartment

of the detergent drawer. Do not exceed the MAX level.

- Thick softeners may cause clogging of the drawer and should be diluted.
- It is possible to use fluid detergents in all programmes without a pre-wash. To do this, slide the fluid detergent level plate (\*) into the guides in compartment II of the detergent drawer. Use the lines on the plate as a guide to fill the drawer to the required level.

(\*) Specifications may vary depending on the machine purchased.

## 6.4 Operating Your Machine



1. Plug your machine in to the mains supply.
2. Turn on the water supply.
  - Open the machine door.
  - Evenly spread your laundry in the machine.
  - Gently push the door until it clicks shut.

## 6.5 Selecting a Programme

Use the programme tables to select the most appropriate programme for your laundry.

## 6.6 Half-Load Detection System

Your machine features a half-load detection system.

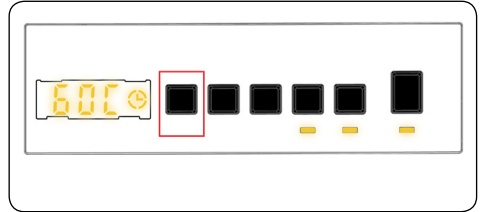
If you put less than half the maximum load of laundry into your machine it will automatically set the half-load function, regardless of the programme you selected. This means that the selected programme will take less time to complete and will use less water and energy.

(\*) Model Dependant

## 6.7 Additional Functions

### 1. Temperature Selection

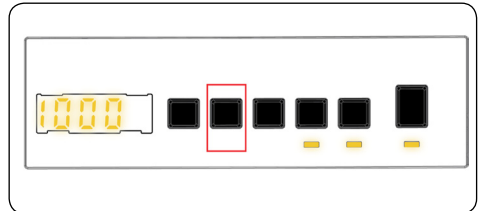
Use the washing water temperature adjustment button to alter the automatically programmed washing water temperature.



When you select a programme the maximum temperature for that programme is automatically selected. To adjust the temperature, press the water temperature adjustment button until the desired temperature is displayed on the digital display.

You can gradually decrease the washing water temperature between the maximum washing water temperature of the selected programme and cold washing (- - C) selections by pressing the temperature adjustment button.

### 2. Spin Speed Selection

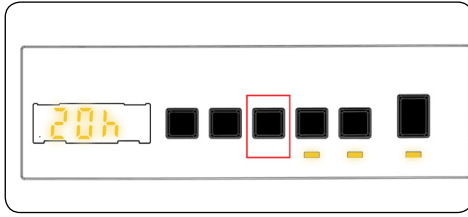


When you select a programme, the maximum spin speed is automatically selected.

To adjust the spin speed between the maximum spin speed and the cancel spinning option (- - -), press the Spin speed button until the desired speed is displayed.

If you have skipped the spin speed you want to set, keep pressing the spin speed adjustment button until the desired spin speed is displayed again.

### 3. Delay Timer



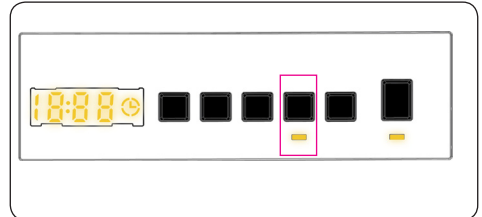
You can use this auxiliary function to delay the start time of the washing cycle for 1 to 23 hours .

To use the delay function:

- Press the delay key once.
- “01h” will be displayed. ☉ will light up on the electronic display.
- Press the delay key until you reach the time after which you want the machine to start the washing cycle.
- If you have skipped the delay time you would like to set, you can keep pressing the delay key until you reach that time again.
- To use the time delay function, you need to press the Start/Pause key to start the machine.
- If you want to cancel the delay:
  - If you have pressed the Start/Pause key to start the machine, you just need to press the delay key once. ☉ will go off on the electronic display.
  - If you have not pressed the Start/ Pause key, press the delay key continuously until ☉ goes off on the electronic display. ☉ will go off on the electronic display.

**NOTE:** In the case that you want to select the auxiliary function feature, if the auxiliary function LED is not on, this means that this feature is not being used in the washing programme you have selected.

### 4. Time Dry selection :



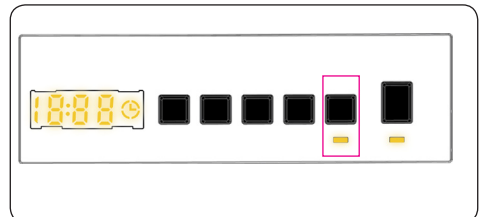
If you continue pressing, duration options (0:30, 0:60, 0:90, 120 minutes) will be displayed. You can select the drying duration you want.

**NOTE:** If one of the 30' 60' 90' 120' above drying duration options is not displayed when you press the Time Dry button, it is not available for the selected programme.

**Table:** Recommended drying durations for load amounts:

| Time Dry Programmes  |                         |
|--|-------------------------|
| Amount of laundry to dry   | Recommended drying time |
| 1 kg   | 30 minutes              |
| 2 kg   | 60 minutes              |
| 3,0 kg   | 90 minutes              |
| 3.5 kg   | 120 minutes             |
| If the amount of laundry to be dried is above 3.5kg, we recommend that you select Cupboard, Hanger or Iron Drying. |                         |

### 5. Dry option selection:



By pressing the dry option, “Dry option” key, you can use this drying function for your laundry you wish to dry after washing. If you want to enable this function, you should press the drying level key after the program you have selected. Drying level has 3 types of drying: “Cupboard dry”, “Hanger dry”,

and "Iron dry". If the drying level option is selected, the time on the display will be updated. The time on the display will increase when switching from ironing dry towards Cupboard dry. If you do not want to use the drying level function at the end of the washing program, please press and hold the key until its LED goes off.

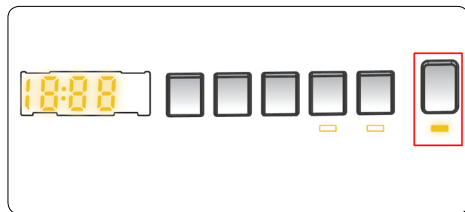
If you select time drying, first of all, 30', 60', 90' or 120' will be displayed depending on the selection, after which the drying time will be added to the selected program and the updated time will be displayed.

## 6. Drying option selection:

| PROGRAMME                      | SELECTABLE/<br>NOT<br>SELECTABLE | DRYING<br>PROFILE | FACTORY<br>PRESET | SELECTABLE OPTIONS |          |          |
|--------------------------------|----------------------------------|-------------------|-------------------|--------------------|----------|----------|
|                                |                                  |                   |                   | Option 1           | Option 2 | Option 3 |
| Cotton 60°C                    | S                                | Cotton Dry        | -                 | Option 1           | Option 2 | Option 3 |
| Cotton 40°C                    | S                                | Cotton Dry        | -                 | Option 1           | Option 2 | Option 3 |
| Eco 20°C                       | S                                | Cotton Dry        | -                 | Option 1           | Option 2 | -        |
| Synthetics                     | S                                | Gentle Dry        | -                 | Option 1           | Option 2 | Option 3 |
| Wool&Silk                      | NS                               | -                 | -                 | -                  | -        | -        |
| Duvet                          | NS                               | -                 | -                 | -                  | -        | -        |
| Rinse                          | S                                | Cotton Dry        | -                 | Option 1           | Option 2 | Option 3 |
| Allergy Safe                   | S                                | Cotton Dry        | -                 | Option 1           | Option 2 | -        |
| Spin / Drain                   | S                                | Cotton Dry        | -                 | Option 1           | Option 2 | Option 3 |
| Rapid 15'                      | S                                | Cotton Dry        | -                 | Option 1           | -        | -        |
| Daily 60'/60°                  | S                                | Cotton Dry        | -                 | Option 1           | Option 2 | -        |
| Gentle dry                     | S                                | Gentle Dry        | Option 2          | Option 1           | Option 2 | Option 3 |
| Cotton Dry                     | S                                | Cotton Dry        | Option 2          | Option 1           | Option 2 | Option 3 |
| Quick Wash<br>& Dry            | NS                               | Cotton Dry        | Option 1          | -                  | -        | -        |
| Cotton Wash<br>& Dry           | S                                | Cotton Dry        | Option 2          | Option 1           | Option 2 | Option 3 |
| S: Selectable NS: No Selection |                                  |                   |                   |                    |          |          |

| Selectable drying duration levels |    |    |    |     |
|-----------------------------------|----|----|----|-----|
| Cotton 60°C                       | 30 | 60 | 90 | 120 |
| Cotton 40°C                       | 30 | 60 | 90 | 120 |
| Eco 20°C                          | 30 | 60 | 90 | 120 |
| Synthetics                        | 30 | 60 | 90 | 120 |
| Wool&Silk                         | -  | -  | -  | -   |
| Duvet                             | -  | -  | -  | -   |
| Rinse                             | 30 | 60 | 90 | 120 |
| Allergy Safe                      | 30 | 60 | 90 | 120 |
| Spin / Drain                      | 30 | 60 | 90 | 120 |
| Rapid 15'                         | 30 | 60 | 90 | 120 |
| Daily 60'/60°                     | 30 | 60 | 90 | 120 |
| Gentle dry                        | 30 | 60 | 90 | 120 |
| Cotton Dry                        | 30 | 60 | 90 | 120 |
| Quick Wash & Dry                  | -  | -  | -  | -   |
| Cotton Wash & Dry                 | 30 | 60 | 90 | 120 |

## 6.8 Start/Pause button

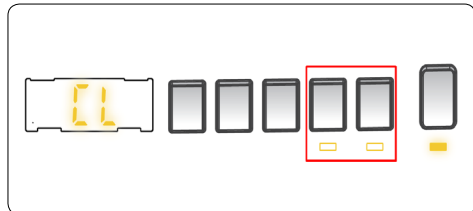


By pressing on the Start/Pause button, you may start the programme you have selected or suspend a running programme. If you switch your machine to the standby mode, the Start/Pause led on the electronic display will blink.

## 6.9 Child Lock

The Child Lock function allows you to lock the buttons so that the wash cycle you have chosen cannot be changed unintentionally.

To activate child lock, press and hold button 2 and 3 simultaneously for at least 3 seconds. "CL" will flash on the electronic display for 2 seconds when the child lock is activated.



If any button is pressed or selected programme is changed by the programme dial while the child lock is active, the "CL" symbol will flash on the electronic display for 2 seconds.

If the child lock function is active and a programme is running, when the programme dial is turned to the CANCEL position and another programme is selected the previously selected programme continues from where it was left.

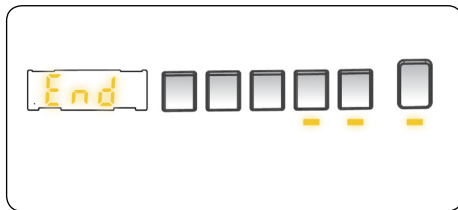
To deactivate the child lock, press and hold button 2 and 3 simultaneously for at least 3 seconds until the "CL" symbol on the electronic display disappears.

## 6.10 Cancelling the Programme

To cancel a running programme at any time:

1. Turn the programme dial to the "STOP" position.
2. Your machine will stop the washing operation and the programme will be cancelled.
3. Turn the programme dial to any other programme to drain the machine.
4. Your machine will perform the necessary draining operation and cancel the programme.
5. You can now select and run a new programme.

## 6.11 Programme End
















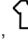
Your machine will stop by itself as soon as the programme you have selected finishes.

- "END" will flash on the electronic display.
- You can open the machine's door and remove the laundry.
- Leave the door of your machine open to allow the inner part of your machine to dry.
- Switch the programme dial to STOP position.
- Unplug your machine.
- Turn the water tap off.



## 7. PROGRAMME TABLE

| Programme                            | Cotton 60°C   | Cotton 40°C   | Eco 20°   |
|--------------------------------------|---|---|---|
| Selectable washing temperatures (°C) | 90°, 80°, 70°, 40°, 60°*  | "- -C"(Cold wash), 30°, 40°*  | "- -C"(Cold wash), 20°*   |
| Maximum washing/drying capacity (kg) | 8.0 / 6.0   | 8.0 / 6.0   | 4.0 / 4.0   |
| Selectable spin speed (rev / min)    | "- - -" (No spin), 400, 600, 800, 1000, 1200, 1400*   | "- - -" (No spin), 400, 600, 800, 1000, 1200, 1400*   | "- - -" (No spin), 400, 600, 800, 1000, 1200, 1400*   |
| Laundry type / Descriptions          | Heat resistant cotton and linen textiles (underwear, bedding, tablecloths and towels) (max 4.0 kg)  | Cotton and linen textiles (underwear, bed sheet, tablecloth, towel (max. 4.0 kg)  | Less dirty, cotton and linen textiles. (bed sheet, tablecloth, towel (max. 2.0 kg)  |
| Selectable additional functions      | "- -C" (Cold wash), "- - -" (No spin),   | "- -C" (Cold wash), "- - -" (No spin),   | "- -C" (Cold wash), "- - -" (No spin),    |
| Selectable drying functions**        |   |   |   |
| Programme duration (Min.)            | 185   | 180   | 103   |




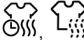
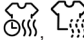
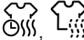
| Programme                            | Synthetics  | Wool & Silk  | Duvet   |
|--------------------------------------|---|--|---|
| Selectable washing temperatures (°C) | "- -C"(Cold wash), 30°, 40°*  | "- -C"(Cold wash), 30°*  | "- -C"(Cold wash), 30°, 40°*  |
| Maximum washing/drying capacity (kg) | 3.5 / 3.5   | 2.5  | -   |
| Selectable spin speed (rev / min)    | "- - -" (No spin), 400, 600, 800, 1000, 1200*   | "- - -" (No spin), 400, 600, 800*  | "- - -" (No spin), 400, 600, 800*   |
| Laundry type / Descriptions          | Synthetic and synthetic mix textiles. (synthetic content shirt, blouse, socks etc.)   | Woollen and wool mix laundry with machine wash labels.   | For washing a fibre duvet with a machine washable label. (max. 2.5 kg)  |
| Selectable additional functions      | "- -C" (Cold wash), "- - -" (No spin),   | "- -C" (Cold wash), "- - -" (No spin),  | "- -C" (Cold wash), "- - -" (No spin),  |
| Selectable drying functions**        |   | -  | -   |
| Programme duration (Min.)            | 110   | 43   | 99  |




**⚠ NOTE:** THE PROGRAMME DURATION MAY CHANGE ACCORDING TO THE AMOUNT OF LAUNDRY, TAP WATER, AMBIENT TEMPERATURE AND SELECTED ADDITIONAL FUNCTIONS.

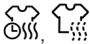
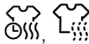

(\*) Programme factory default settings.






(\*\*) When you want to select more than one additional function, the additional functions you wish to select may not comply with each other.

Do not dry towels, cotton and linens, and synthetic and sythetic mix clothes together.  
For drying select the most appropriate drying program for the clothes.

| Programme                            | Rinse   | Allergy Safe   | Spin / Drain  |
|--------------------------------------|---|--|---|
| Selectable washing temperatures (°C) | "- -C"(Cold wash)*  | "- -C"(Cold wash), 30°, 40°,50°,60*  | "- -C"(Cold wash)*  |
| Maximum washing/drying capacity (kg) | 8.0 / 6.0   | 4.0 / 4.0  | 8.0 / 6.0   |
| Selectable spin speed (rev / min)    | "- - -" (No spin), 400, 600, 800, 1000, 1200, 1400*   | "- - -" (No spin),400, 600, 800*   | "- - -" (No spin),400, 600, 800, 1000, 1200, 1400*  |
| Laundry type / Descriptions          | This programme can be used for additional rinsing after washing.  | Baby dresses   | You can use this program for any type of laundry if you want an additional spin step after the washing cycle./ You can use the drain program to drain the water accumulated inside the machine (adding or removing laundry). To enable the drain program, turn the program knob to the spin/drain program. After you select "spin cancelled" using the auxiliary function key, the program will start to run. |
| Selectable additional functions      | "- -C" (Cold wash)*, "- - -" (No spin),  | "- -C" (Cold wash), "- - -" (No spin),  | "- -C" (Cold wash)*, "- - -" (No spin),    |
| Selectable drying functions**        |    |   |    |
| Programme duration (Min.)            | 30  | 177  | 24  |

| Programme                            | Rapid 15'  | Daily 60'  | Gentle Dry   |
|--------------------------------------|--|--|--|
| Selectable washing temperatures (°C) | "- -C"(Cold wash), 30°*  | "- -C"(Cold wash), 30°, 40°,50°,60*  | -  |
| Maximum washing/drying capacity (kg) | 2.0 / 2.0  | 4.0 / 4.0  | 3.5  |
| Selectable spin speed (rev / min)    | "- - -" (No spin), 400, 600, 800*  | "- - -" (No spin), 400, 600, 800, 1000, 1200 1400*   | -  |
| Laundry type / Descriptions          | For washing less dirty cotton, coloured and linen textiles in a little as 15 minutes.<br>Note: As the washing time is short, less detergent is required than in other programmes. The programme period will increase if your machine detects unstable loading. | Dirty, cotton, coloured and linen textiles. (The washing duration for loads of 2kg and under is 30 minutes)                | Cotton laundry with machine dryable label.   |
| Selectable additional functions      | "- -C" (Cold wash), "- - -" (No spin),    | "- -C" (Cold wash), "- - -" (No spin),  | "- -C" (Cold wash),  |

|                                |  |  |  |
|--------------------------------|--|--|--|
| Selectable drying functions ** |  |  |  |
| Programme duration (Min.)      | 15   | 60   | 100  |

| Programme                            | Cotton Dry  | Quick Wash & Dry  | Cotton Wash & Dry  |
|--------------------------------------|---|---|--|
| Selectable washing temperatures (°C) | "- -C"(Cold wash)*  | "- -C"(Cold wash), 30°*   | "- -C"(Cold wash), 30°, 40°, 60°*, 90°   |
| Maximum washing/drying capacity (kg) | 6.0   | 0.5 kg (3 shirts)   | 6.0  |
| Selectable spin speed (rev / min)    | -   | 800*  | 1400*  |
| Laundry type / Descriptions          | Cotton laundry with machine dryable label.  | Cotton, coloured and linen laundry with machine dryable label.<br>Note: The machine automatically determines the duration of the programme according to the amount of laundry in the machine. | Cotton and linen textiles (underwear, bed sheets, tablecloth, towel (max. 4.0 kg))                     |
| Selectable additional functions      | "- -C" (Cold wash),  | "- -C" (Cold wash),    | "- -C" (Cold wash),  |
| Selectable drying functions **       |                      | -   |                       |
| Programme duration (Min.)            | 135   | 33  | 285  |

**! NOTE:** THE PROGRAMME DURATION MAY CHANGE ACCORDING TO THE AMOUNT OF LAUNDRY, TAP WATER, AMBIENT TEMPERATURE AND SELECTED ADDITIONAL FUNCTIONS.

(\*) Programme factory default settings.

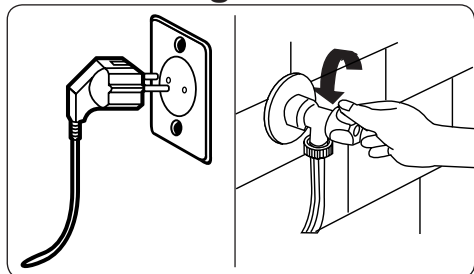
(\*\*) When you want to select more than one additional function, the additional functions you wish to select may not comply with each other.

Do not dry towels, cotton and linens, and synthetic and sythetic mix clothes together.

For drying select the most appropriate drying program for the clothes.

## 8. CLEANING AND MAINTENANCE

### 8.1 Warning



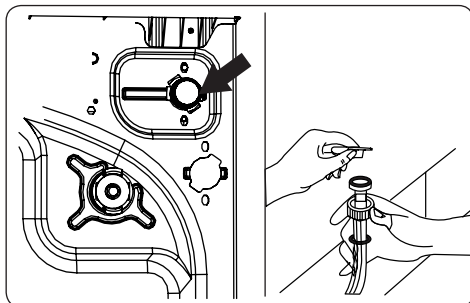
Turn your mains power supply off and remove the plug from the socket before carrying out maintenance and cleaning of your machine.

Turn off the water supply before starting maintenance and cleaning of your machine.

**⚠ CAUTION:** Do not use solvents, abrasive cleaners, glass cleaners or all-purpose cleaning agents to clean your Washing Machine. They may damage the plastic surfaces and other components with the chemicals they contain.

### 8.2 Water Inlet Filters

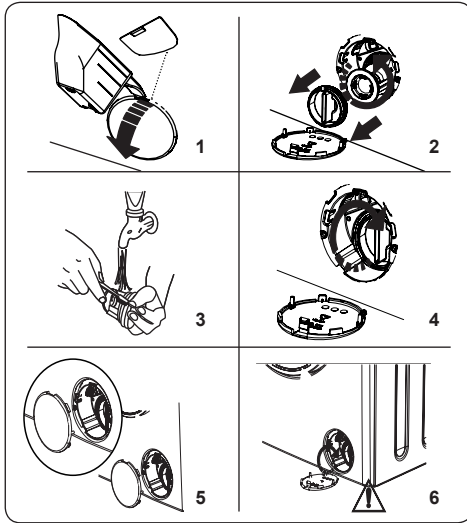
Water inlet filters prevent dirt and foreign materials from entering your machine. We recommend that these filters are cleaned when your machine is unable to receive sufficient water, although your water supply is on and the tap is open. We recommend that you clean your water inlet filters every 2 months.



- Unscrew the water inlet hose(s) from the Washing Machine.
- To remove the water inlet filter from the water inlet valve, use a pair of long-nosed pliers to gently pull on the plastic bar in the filter.
- A second water inlet filter is located in the tap end of the water inlet hose. To remove the second water inlet filter, use a pair of long-nosed pliers to gently pull on the plastic bar in the filter.
- Clean the filter thoroughly with a soft brush and wash with soapy water and rinse thoroughly. Re-insert the filter by gently pushing it back into place.

**⚠ CAUTION:** The filters at the water inlet valve may become clogged due to water quality or lack of required maintenance and may break down. This may cause a water leak. Any such breakdowns are out of the scope of the warranty.

### 8.3 Pump Filter



The pump filter system in your Washing Machine prolongs the life of the pump by preventing lint from entering your machine. We recommend that you clean the pump filter every 2 months.

The pump filter is located behind the cover on the front-lower right corner.

To clean the pump filter:

1. You may use the washing powder spade (\*) supplied with your machine or liquid detergent level plate to open the pump cover.
2. Lodge the end of the powder spade or liquid detergent level plate in the opening of the cover and gently press backwards. The cover will open.
- Before opening the filter cover, place a container under the filter cover to collect any water left in the machine.
- Loosen the filter by turning anticlockwise and remove by pulling. Wait for the water to drain.



**NOTE:** Depending on the amount of water inside the machine, you may have to empty the water collection container a few times.

3. Remove any foreign materials from the filter with a soft brush.
4. After cleaning, re-fit the filter by inserting it and turning clockwise.
5. When closing the pump cover, ensure that the mountings inside the cover meet the holes on the front panel side.

6. Close the filter cover.

**WARNING:** The water in the pump may be hot, wait until it has cooled down before carrying out any cleaning or maintenance.

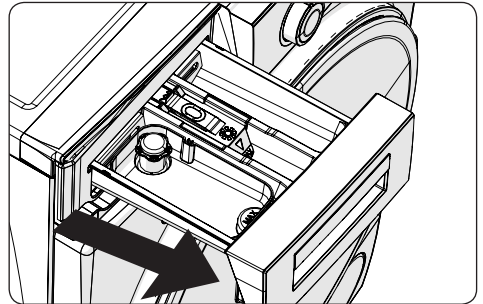
(\*) Specifications may vary depending on the machine purchased.

### 8.4 Detergent Drawer

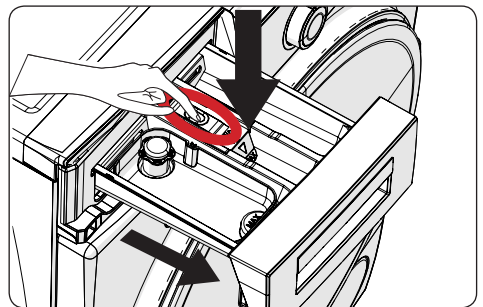
The use of detergent may cause residual build up in the detergent drawer over time. We recommend that you remove the drawer every 2 months to clean the accumulated residue.

To remove the detergent drawer:

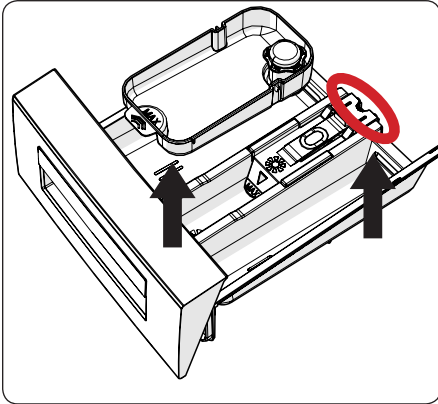
- Pull the drawer forwards until it is fully extended.



- Press the region shown below inside the detergent drawer you have pulled all the way back, and continue pulling and remove the detergent drawer from its place



- Remove the detergent drawer and disassemble the flush stopper. Clean thoroughly to completely remove any softener residue. Refit the flush stopper after cleaning and check that it is seated properly.



- Rinse with a brush and lots of water.
- Collect the residues inside the detergent drawer slot so that they don't fall inside your machine.
- Dry the detergent drawer with a towel or dry cloth and place it back



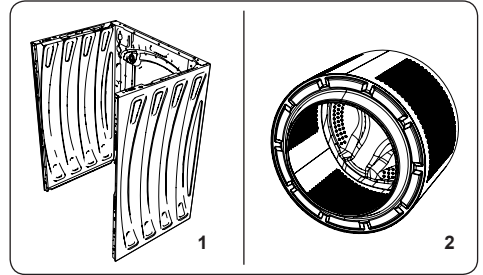
**Do not wash your detergent drawer in a dishwasher.**

#### Liquid detergent apparatus(\*)

For the cleaning and maintenance of the liquid level detergent apparatus, remove the apparatus from its location as shown in the picture below, and thoroughly clean the remaining detergent residues. Replace the apparatus. Make sure that no residual material remains inside the siphon.

(\*) Specifications may vary depending on the machine purchased.

## 9. Body / Drum



### 1. Body

Use a mild, non-abrasive cleaning agent, or soap and water, to clean the external casing. Wipe dry with a soft cloth.

### 2. Drum

Do not leave metallic objects such as needles, paper clips, coins etc. in your machine. These objects lead to the formation of rust stains in the drum. To clean such rust stains, use a non-chlorine cleaning agent and follow the instructions of manufacturer of the cleaning agent. Never use wire wool or similar hard objects for cleaning rust stains.

## 10. TROUBLESHOOTING

Repair of your machine should be carried out by an authorised service company. If your machine requires repair or if you cannot solve an issue with the information provided below, then you should:

- Unplug your machine from the mains power supply.
- Turn off the water supply.

| FAULT   | POSSIBLE CAUSE   | TROUBLESHOOTING   |
|---|--|---|
| Your machine does not start.                      | Machine not plugged in.  | Plug machine in.  |
|   | Fuses are faulty.  | Replace the fuses.  |
|   | No mains power supply.   | Check mains power.  |
|   | Start/Pause button not pressed.  | Press the Start/Pause button.   |
|   | Programme dial 'stop' position.  | Turn the programme dial to the desired position.  |
|   | The machine door is not completely closed.                             | Close the machine door.   |
| Your machine does not intake water.               | Water tap is turned off.   | Turn tap on.  |
|   | Water inlet hose may be twisted.                                       | Check water inlet hose and untwist.   |
|   | Water inlet hose clogged.  | Clean water inlet hose filters. (*)   |
|   | Inlet filter clogged.  | Clean the inlet filters. (*)  |
|   | The machine door is not completely closed.                             | Close the machine door.   |
| Your machine does not discharge water.            | Drain hose clogged or twisted.   | Check the drain hose, then either clean or untwist.   |
|   | Pump filter clogged.   | Clean the pump filter. (*)  |
|   | Laundry is too tightly packed together in the drum.                    | Spread your laundry in the machine evenly.  |
| Your machine vibrates.                            | The feet have not been adjusted.                                       | Adjust the feet. (**)   |
|   | Transit bolts fitted for transportation have not been removed.         | Remove the transit bolts from the machine. (**)   |
|   | Small load in the drum.  | This will not prevent operation of your machine.  |
|   | Your machine is overloaded with laundry or laundry is unevenly spread. | Do not overload the drum. Spread laundry evenly in the drum.  |
|   | Your machine rests on a hard surface.                                  | Do not set up your Washing Machine on a hard surface.   |
| Excessive foam is formed in the detergent drawer. | Excessive amount of detergent used.                                    | Press the Start/Pause button. To stop the foam, dilute one tablespoon of softener into 1/2 litre of water and pour into the detergent drawer. Press the Start/Pause button after 5-10 mins. |
|   | Wrong detergent used.  | Only use detergents produced for automatic Washing Machines.  |
| Unsatisfactory washing result.                    | Your washing is too dirty for the programme selected.                  | Use the information in the programme tables to select the most appropriate programme.   |
|   | Amount of detergent used insufficient.                                 | Use the amount of detergent as instructed on the packaging.   |
|   | There is too much laundry in your machine.                             | Check that the maximum capacity for the selected programme has not been exceeded.   |

| FAULT  | POSSIBLE CAUSE   | TROUBLESHOOTING  |
|--|--|--|
| Unsatisfactory washing result.   | Hard water.  | Increase the amount of detergent following the manufacturer's instructions.  |
|  | Your laundry is too tightly packed together in the drum.                               | Check that your laundry is spread out.   |
| As soon as the machine is loaded with water, water discharges.         | The end of water drain hose is too low for the machine.                                | Check that the drain hose is at a suitable height. (**).   |
| No water appears in the drum during washing.                           | No fault. Water is in the unseen part of the drum.                                     | .....  |
| Laundry has detergent residue.   | Non-dissolving particles of some detergents may appear on your laundry as white spots. | Perform an extra rinse, or clean your laundry with a brush after it dries.   |
| Grey spots appear on the laundry.                                      | There is untreated oil, cream or ointment on your laundry.                             | Use the amount of detergent as instructed on the packaging in the next wash.   |
| The spin cycle does not take place or takes place later than expected. | No fault. The Unbalanced load control system has been activated.                       | The Unbalanced load control system will try to spread your laundry. The spinning cycle will begin once your laundry is spread. Load the drum evenly for the next wash. |

(\*) See the chapter regarding maintenance and cleaning of your machine.

(\*\*) See the chapter regarding installation of your machine.

## 11. AUTOMATIC FAULT WARNINGS AND WHAT TO DO

Your Washing Machine is equipped with a built-in fault detection system, indicated by a combination of flashing wash operation lights. The most common failure codes are shown below.

| TROUBLE CODE | POSSIBLE FAULT   | WHAT TO DO  |
|--------------|--|---|
| E01          | The door of your machine is not shut properly.   | Shut the door properly until you hear a click. If your machine persists to indicate fault, turn off your machine, unplug it and contact the nearest authorised service agent immediately.   |
| E02          | The water pressure or the water level inside the machine may be low.                         | Check the tap is fully turned on. Mains water may be cut-off. If the problem still continues, your machine will stop after a while automatically. Unplug the machine, turn off your tap and contact the nearest authorised service agent. |
| E03          | The pump is faulty or pump filter is clogged or electrical connection of the pump is faulty. | Clean the pump filter. If the problem persists, contact the nearest authorised service agent. (*)   |
| E04          | Your machine has excessive amount of water.  | Your machine will discharge water by itself. Once the water has drained, turn off your machine and unplug it. Turn off the tap and contact the nearest authorised service agent.  |

(\*) See the chapter regarding maintenance and cleaning of your machine.



## **12. DESCRIBING THE ENERGY LABEL AND SAVING ENERGY**

Energy use and water consumption may vary based on water pressure, water hardness, water temperature, ambient temperature, amount of laundry, additional function selection and voltage fluctuations.

Energy consumption and water usage can be reduced by not exceeding the washing load specified in the programme tables. Use programmes of shorter duration for lightly soiled laundry and daily washes. Carry out cleaning and maintenance at regular intervals.





**CE**

**52313237**